

CONFIGURATION FILE

1 | BASE CONFIGURATION



NR: NO RAIL



SR: SINGLE RAIL



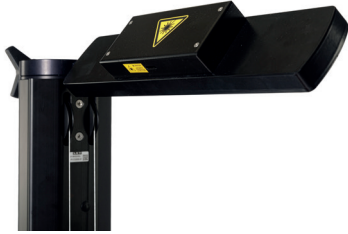
DR: DOUBLE RAIL

Additional requirements per base configuration:

- | NR configuration: no additional requirements
- | SR configuration: requires single rail profile (2.5m + extendable per 1.25m) – to be ordered separately
- | DR configuration: requires double rail profile (to be mounted in concrete, can be adjusted for perfect levelling – 1.5 m or 3 m) – to be ordered separately

All models are standard equipped with wheels with bearings. NR and SR configurations are also equipped with an additional electronic spirit level (included in the price).

2 | OPTIONS



a. Line laser module with 110° green line laser



b. Ergonomic lever for easy adjustment of the alignment mirror or line laser module



c. Tool holder for easy storing of most used tools



d. Additional protective dust cover (Included in standard delivery with new devices)

e. 15" touch screen mounted on the column (additional HDMI connectivity required)

f. Additional connectivity possibilities:

- i. Ethernet
- ii. HDMI



Made in Belgium

